

# LiveSwitch

MASSIVELY FLEXIBLE, HIGHLY SCALABLE  
VIDEO CONFERENCING SDK & SERVER STACK



## ! The Problem

In today's digital marketplace, consumers have come to expect high-quality live audio and video experiences in customized, user-friendly applications. Yet, the live video conferencing solutions on the market today often lack the flexibility needed to create these rich experiences, interop with legacy applications, or accommodate less-than ideal network conditions and device performance.

## 💡 The Solution

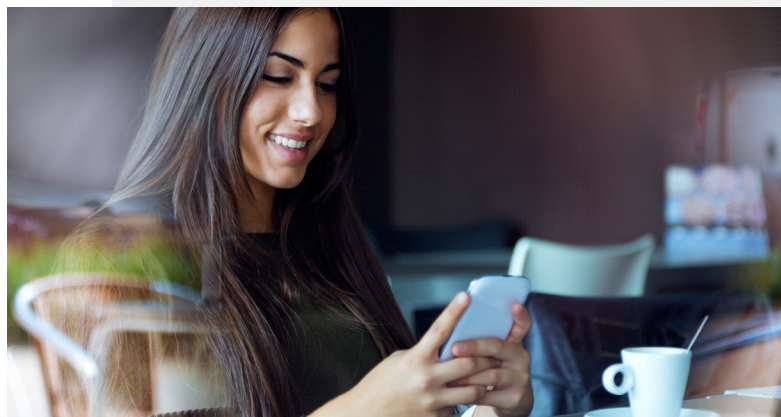
*LiveSwitch* is a massively flexible, highly scalable video conferencing SDK and server stack capable of dynamically and simultaneously connecting two or more WebRTC remote candidates into the cost-optimized conferencing mode best suited for your business. Specifically designed to be the most flexible enterprise-grade professionally supported SDK on the market today, *LiveSwitch* provides everything your team needs to build a custom application that fully integrates **voice, video, chat, IoT technology, telephony, broadcasting, and more** into your existing applications.

## ★ Benefits

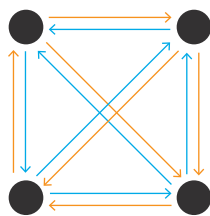
- *LiveSwitch's* flexible architecture reduces costs by providing an API for dynamically selecting the optimal connection type for each participant.
- *LiveSwitch* provides the core technology needed for many kinds of live video use cases, including kiosks, augmented/virtual reality, surveillance and other special IoT devices.
- *LiveSwitch* supports all browsers, mobile and native platforms.
- *LiveSwitch* is a self-hosted software based on-premise solution that allows you to choose when and where to deploy your technology.
- *LiveSwitch* handles all the complexities of signaling, codec selection, transcoding, and network bandwidth adaptation, letting your team focus on the important stuff.

TRY LIVESWITCH FREE! DOWNLOAD  
YOUR FREE TRIAL TODAY!

**frozenmountain.com**  
**1-888-379-6686**

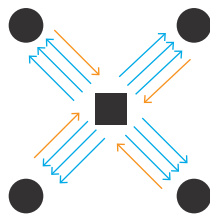


## Peer-to-Peer (P2P)



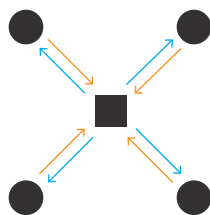
3 Upload, 3 Download streams per peer

## Selective Forwarding Unit (SFU)



1 Upload, 3 Download streams per peer

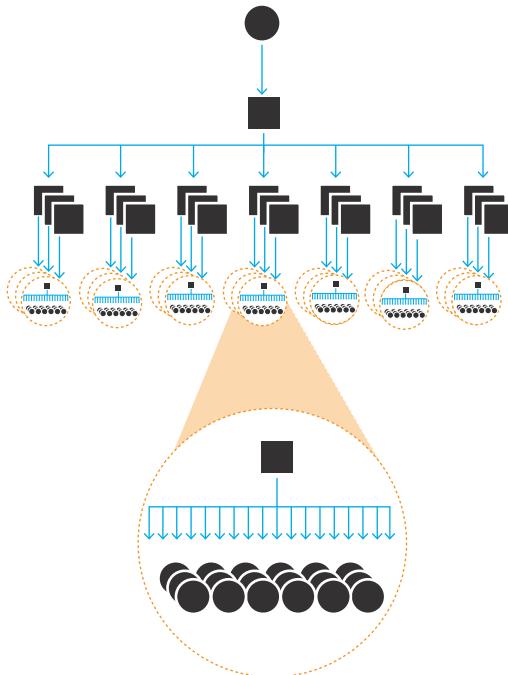
## Multipoint Control Unit (MCU)



1 Upload, 1 Download stream per peer

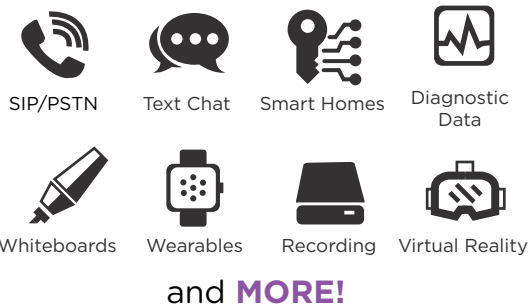
● = participant/peer    ■ = server

## Sub-Second Latency Broadcasting



1 Download stream per peer

## Other Features and Use Cases



## < How It Works

These diagrams are an example of how *LiveSwitch* can be flexibly used in multiple modes

### Hybrid Topology

*LiveSwitch* can seamlessly switch between P2P, SFU and MCU connections as needed by the number of participants or device limitations.

### Broadcasting

*LiveSwitch* allows WebRTC enabled unidirectional video broadcasts that transmit one-to-many audio/video feeds through a cluster of media servers with sub-second latency.

### Telephony Integration

*LiveSwitch* fully integrates with SIP, VoIP and PSTN to allow participants to connect via telephone to an existing WebRTC-based video conference.

The WebRTC Solution that Plays Nice with Everyone

